

Waterlooville Men's Shed



Brief History

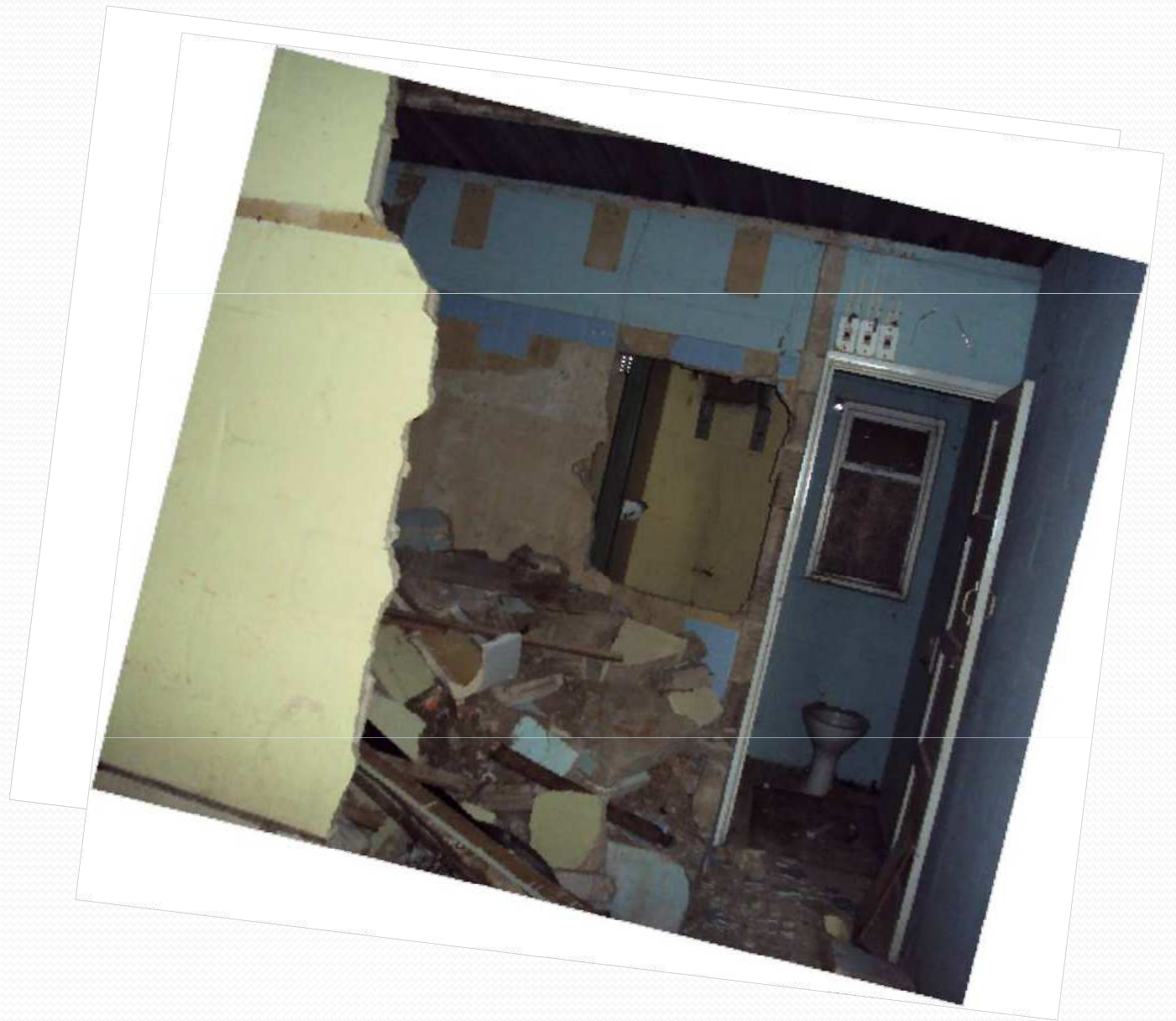
- Formed in November 2013
- Took over the 'Old Pavilion' in February 2014 on five year lease
- Workshops operational by April 2014
- Formal constitution adopted February 2015
- Tea room constructed July 2016
- Chris Davage (founder) died November 2016
- CIO August 2017
- Ten year lease signed September 2017

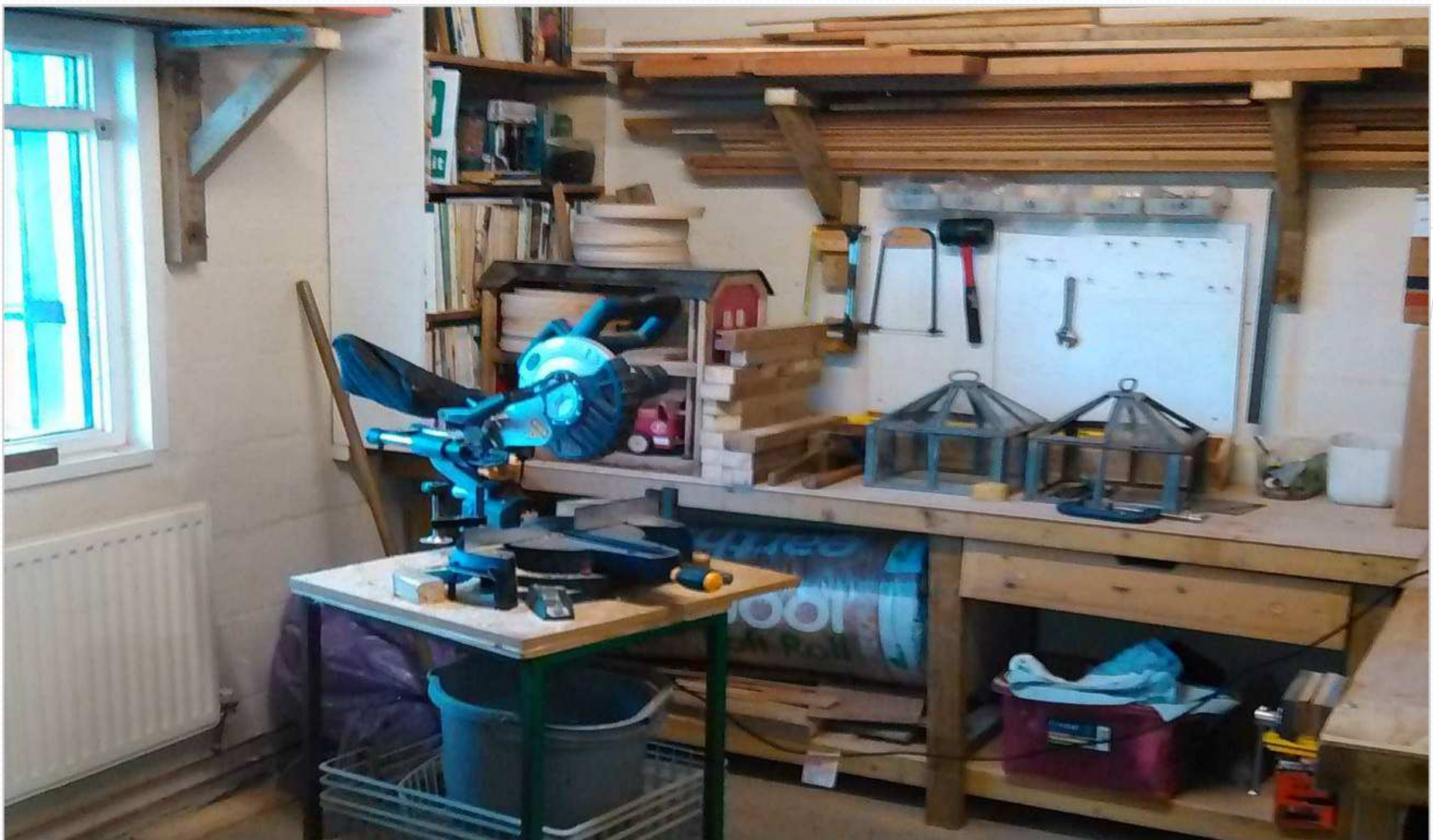


The 'Old Pavilion'

When the Shed took on the Old Pavilion there were eight tons of rubble, no power, half the roof missing and no utilities.

**A peppercorn
rent is paid**





Electrics, water, toilet, sink, roof, all functioning with the original workshops and tea room by April 2014.



Chris Davage

Chris Davage, our founder and former Chairman, (who many of you will have met) worked tirelessly to establish the Shed and get it up and running based on the principles that were later enshrined into our constitution.

Principles

Established with the clear aims of:

- Open every day
- Members welcome to drop in, stay as long as they wish
- Equipment and tools made available to enable members to undertake tasks
- Social activities alongside
- Learn new skills
- Keep active, mentally and physically
- Community at its heart

Workshop Activities

- Tasks related to the maintenance and fabric of the Shed itself.
- Members own tasks, using the Shed equipment and tools.
- Items for sale to the public.
- Bespoke items for individuals.
- Community projects.



**A selection of
the
community
projects
undertaken.**



A huge variety of bespoke items requested by members of the public



Membership

- £25.00 per annum currently
- Membership grown to 54
- 20 pence for tea / coffee (*used to subsidise social events*)
- Photo board used for attendance and fire register (*and to look up names*)
- Weekly emailed news letter to keep membership updated
- Data protection policy
- Health and Safety policy
- Annual General Meeting

Details on our website:
www.waterloovillemensshed.org.uk



Board of Trustees

- Elected annually.
- Chair, Vice Chair, Treasurer, Secretary, Social Secretary
- Able to co-opt members to assist
- Meet monthly
- All meetings recorded and available to members
- Also operate as Key Holders

Social Activities

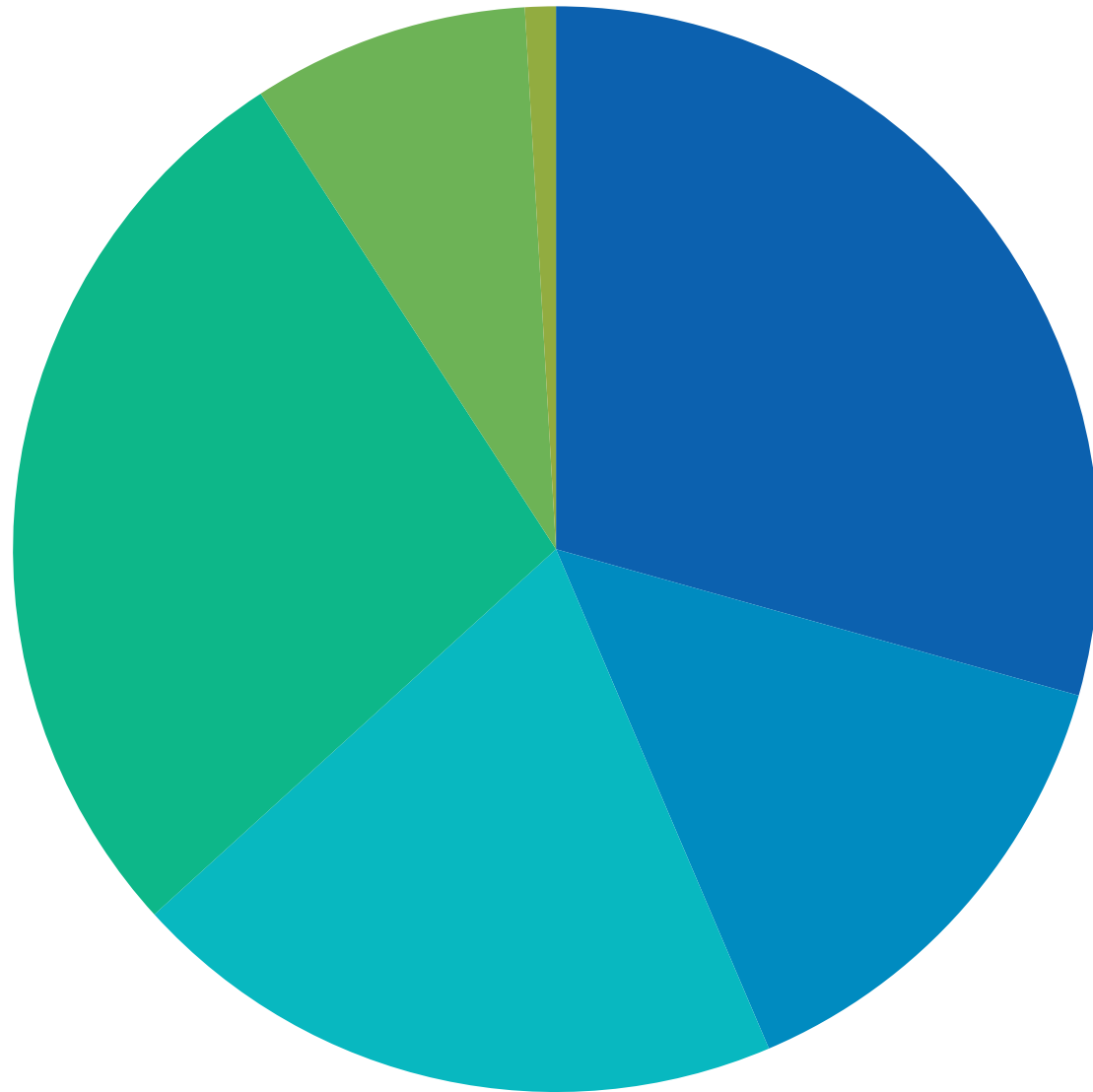
- Christmas dinner
- Summer BBQ
- Events, such as - Skittles evening / Curry and Quiz night
- Partners meet monthly for lunch
- Trips to various destinations such as:
 - House of Commons
 - Bovington Tank museum
 - Craft working and tools exhibition



We are constantly striving to improve the Shed, like this covered outdoor working area. We have been fortunate in attracting donors and grants (far too many to list here) together with at least two excellent 'blaggers'.



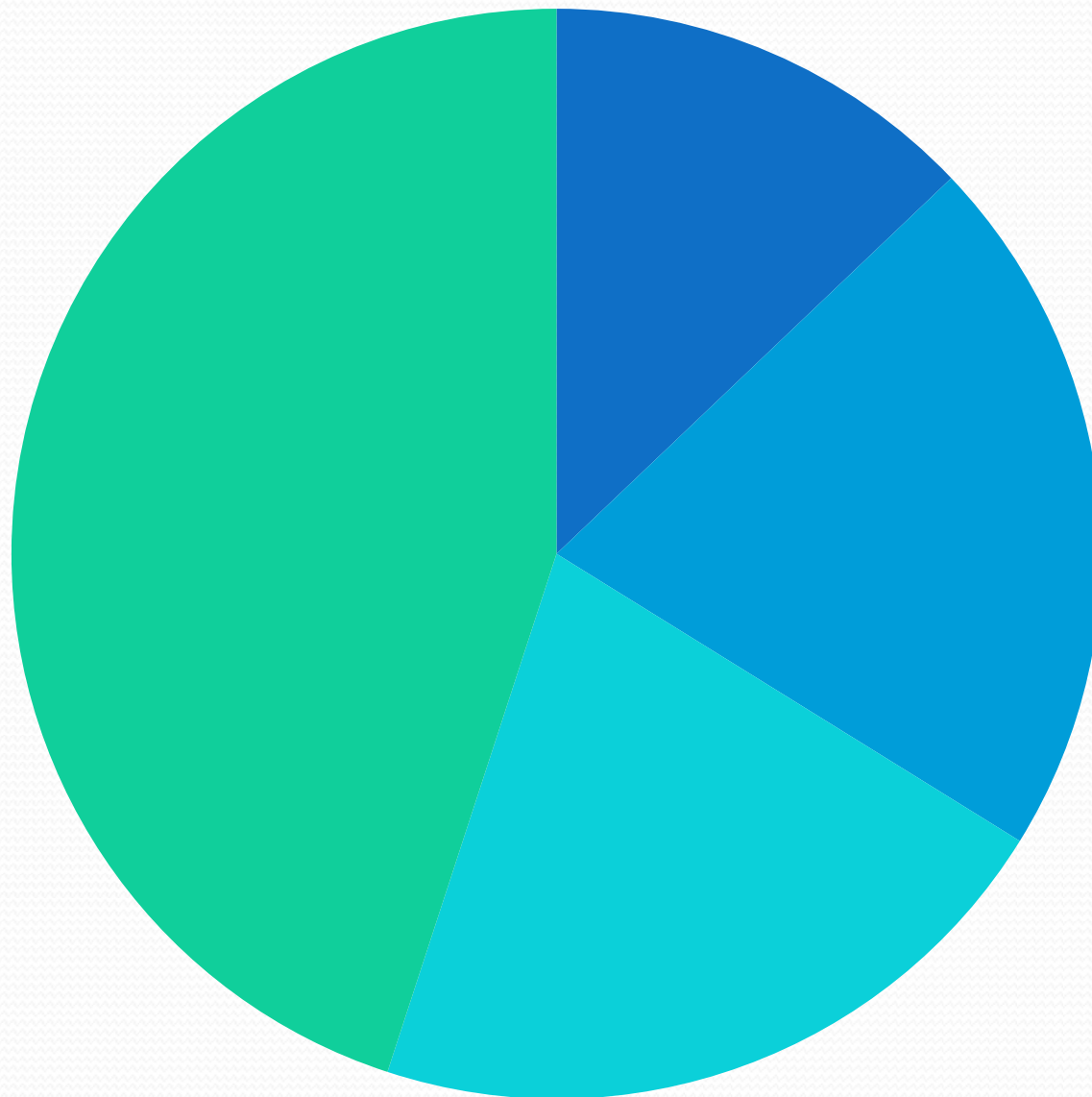
Shed Development



- Donations
- Grants
- Membership
- Sales
- Tea Club
- Misc

Income

Expenditure



■ Insurance

■ Electric

■ Chair's
Fund

■ Other

**Our Shed
is about
the guys
who come
to it!**



Any Questions?

Waterlooville Men's Shed

Charity Number:
1174513

