

Fareham Men's Shed



At Titchfield Festival Theatre



Shedric

Fareham Men's
Shed



At Titchfield Festival Theatre

Our Shed Workshop

In the beginning



Fareham Men's Shed



At Titchfield Festival Theatre

Our Shed Workshop

In the beginning



The original reprobates



**A visit from the Norman McLaughlan
President of the Numurkah Shed in Victoria, Australia**

Fareham Men's Shed



At Titchfield Festival Theatre



Fareham Men's Shed



At Titchfield Festival Theatre

Our Shed Workshop

In the beginning



Fareham Men's Shed



At Titchfield Festival Theatre



Shedric

How the Theatre has changed



As it was



As it is now

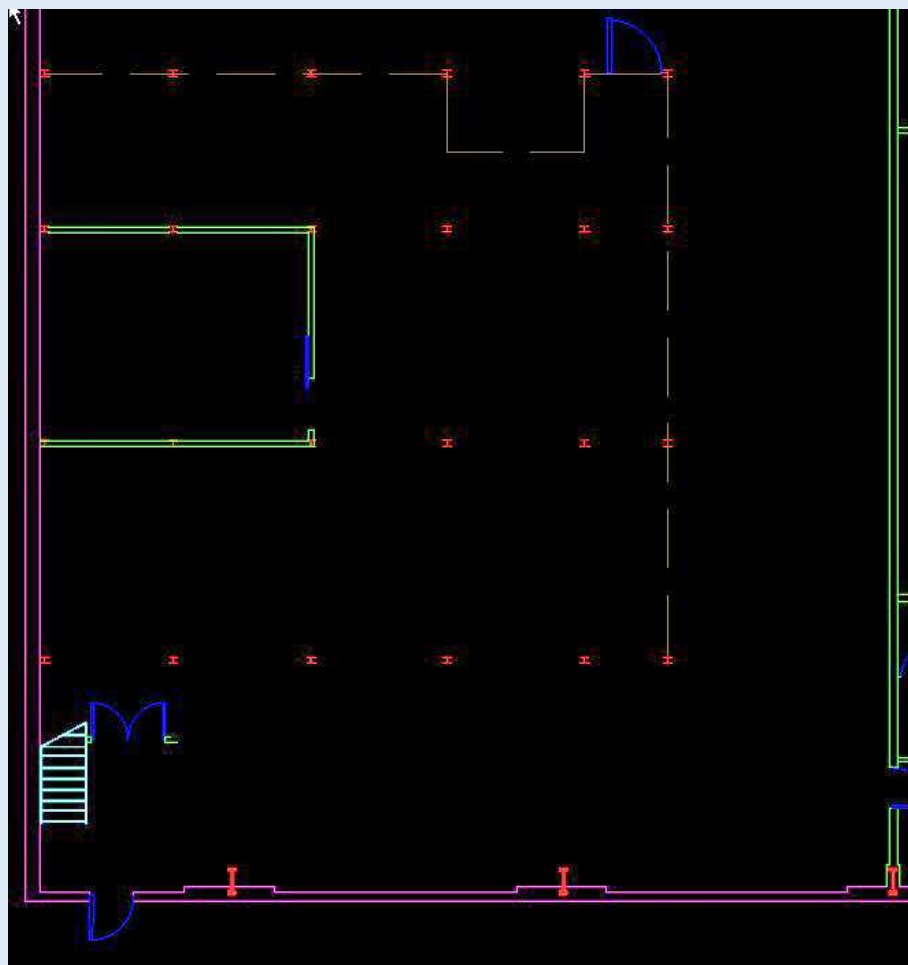
Fareham Men's Shed



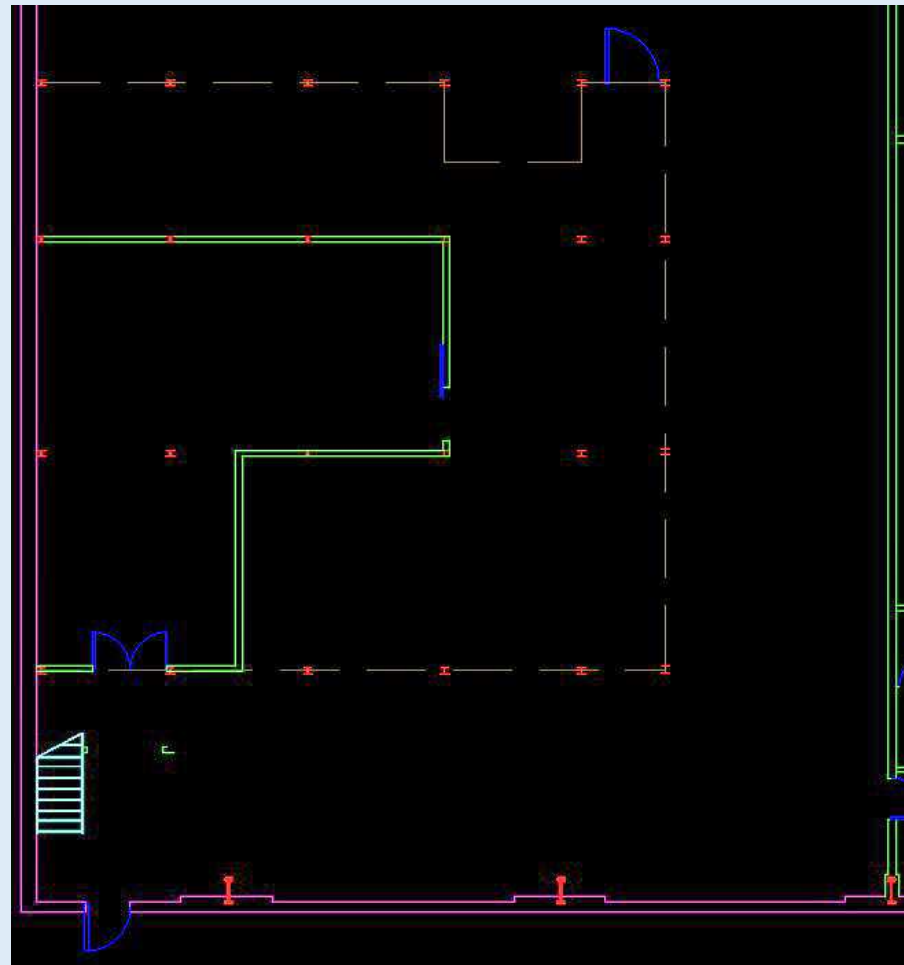
At Titchfield Festival Theatre

Our Shed Workshop

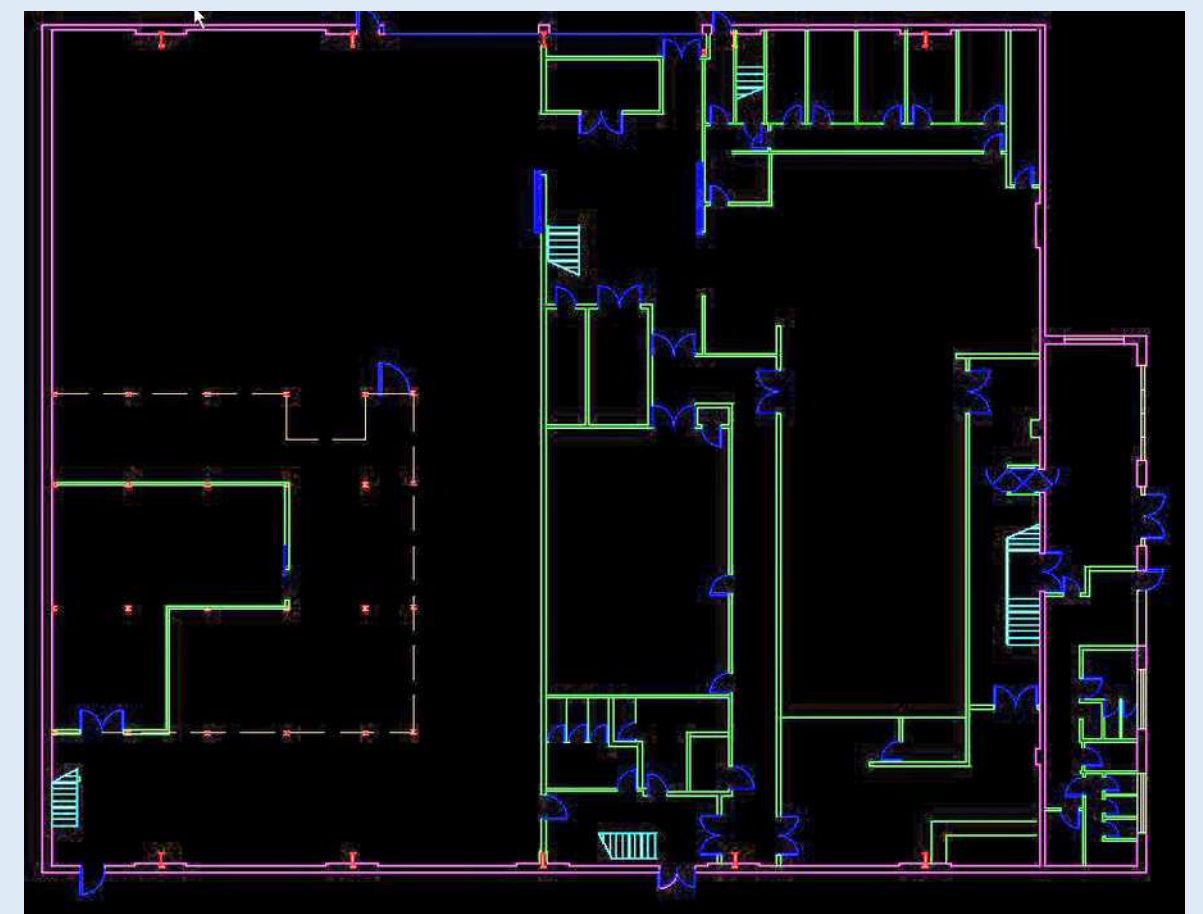
The growth of the Shed



The original Shed



The extended shed



The grand scheme of things

Fareham Men's Shed



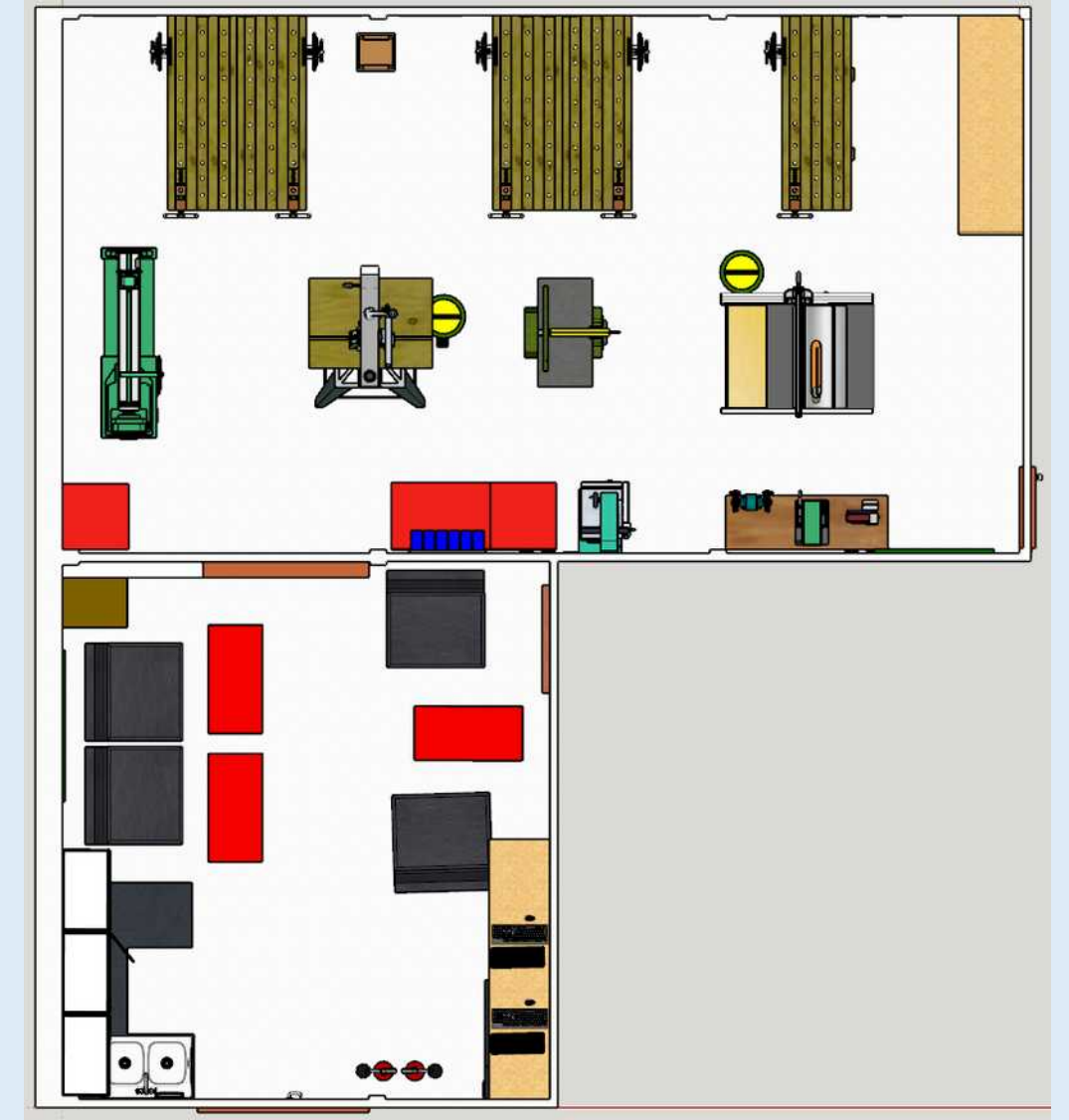
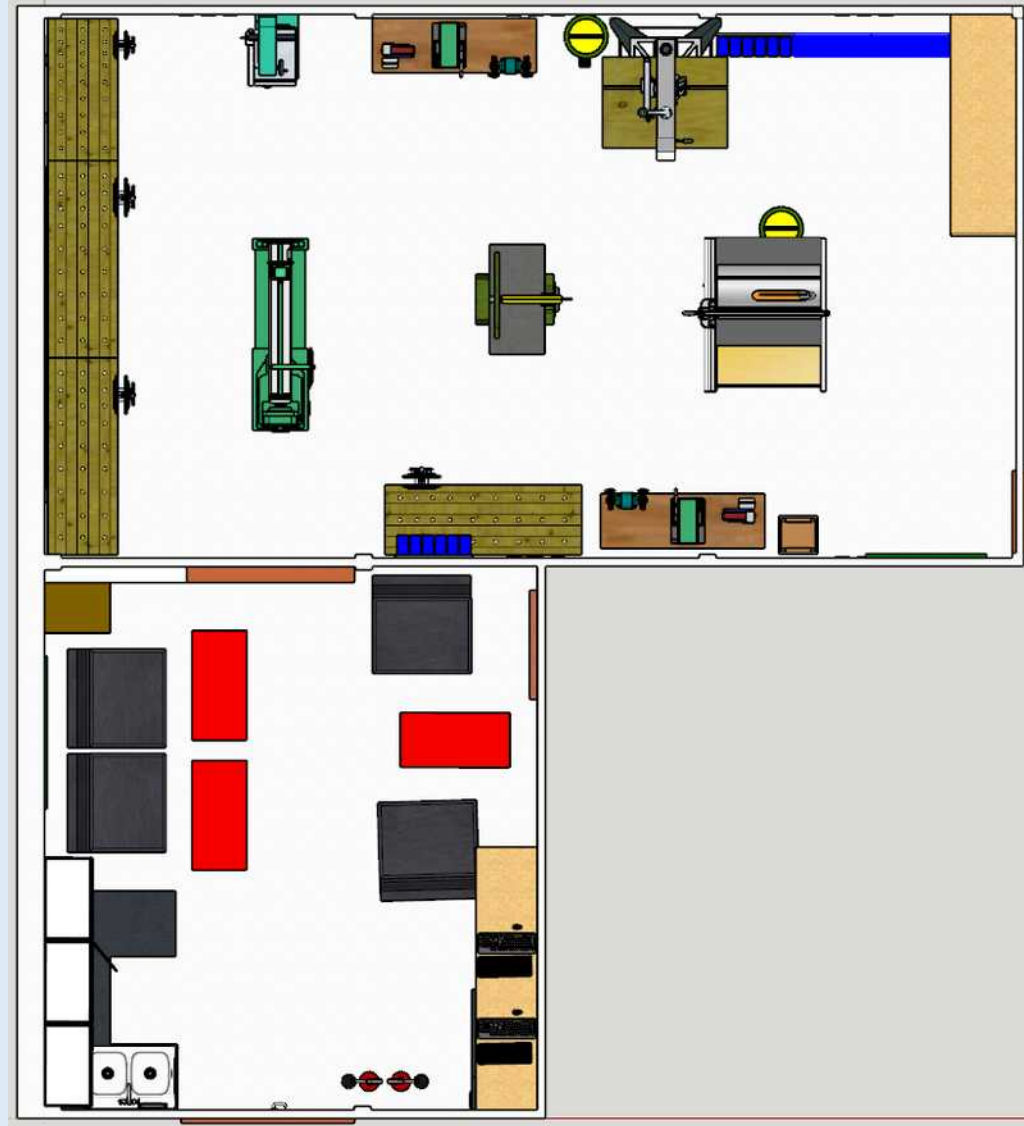
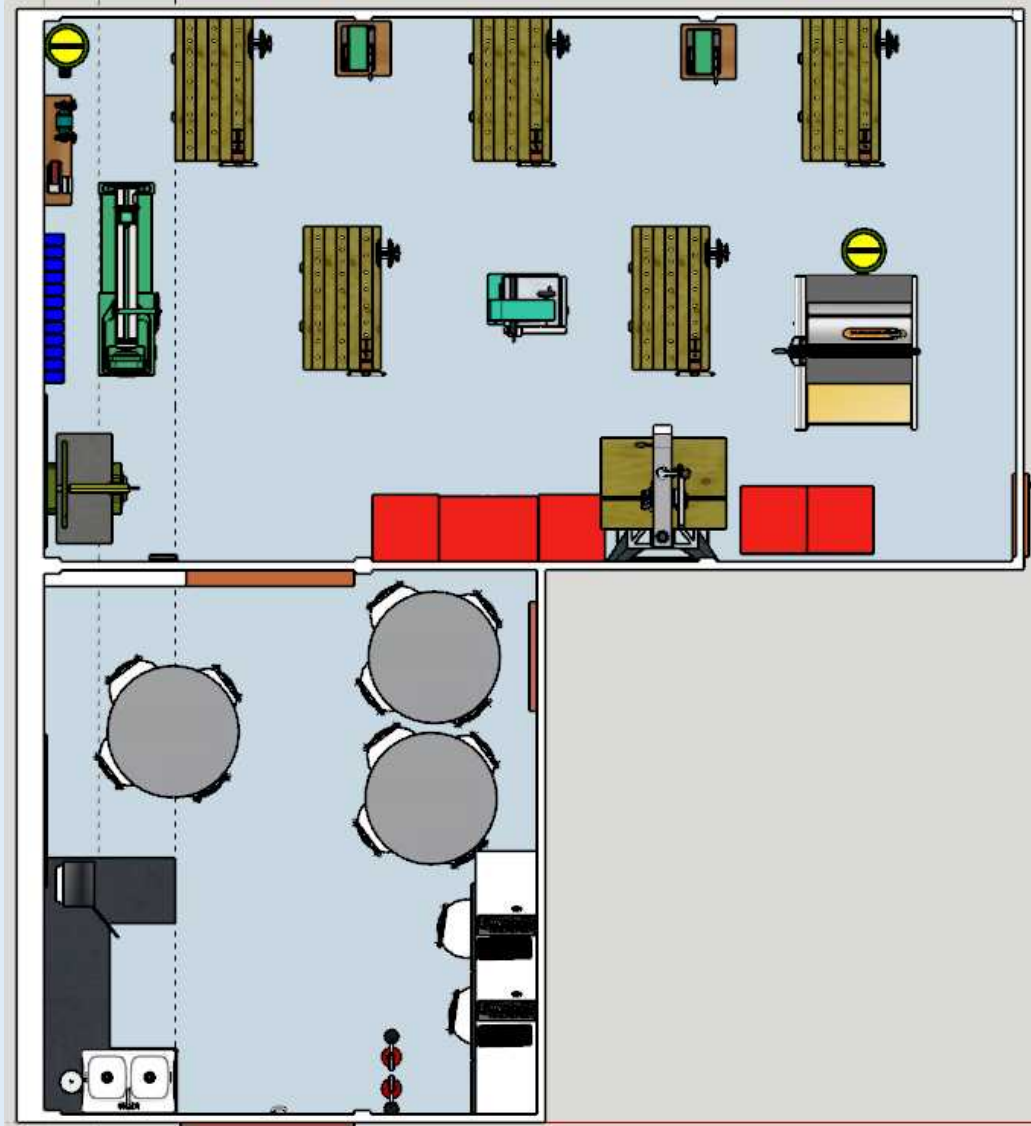
At Titchfield Festival Theatre

Our Shed Workshop

Extension under construction



Initial thoughts



Fareham Men's
Shed



At Titchfield Festival Theatre

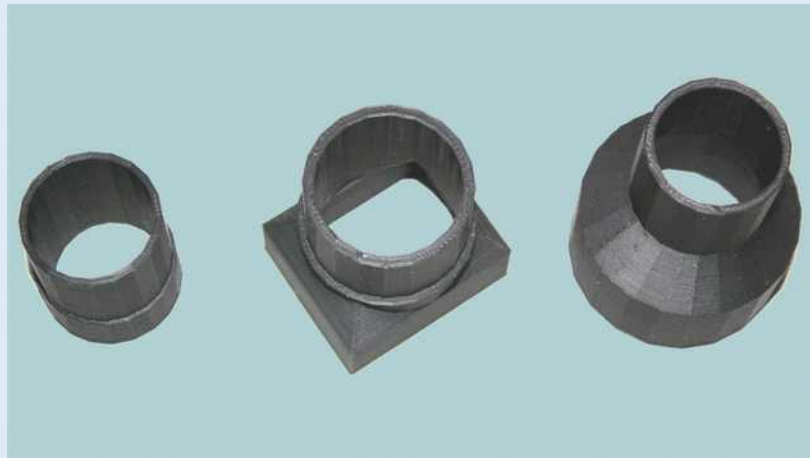
Our Shed Workshop

Nick Girdler of Radio Solent cuts the ribbon

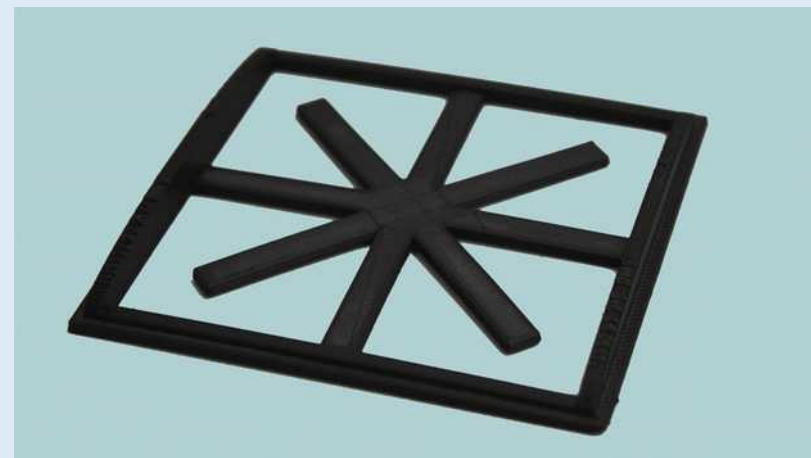


Our Computer Workshop

The 3D printer has been doing some sterling work in creating dust extraction adaptors for various machines in the workshop



Components for various models being made by members



Fareham Men's Shed



At Titchfield Festival Theatre

Recent Projects



The Breast Cancer Haven in Titchfield approached us to see if we could make them a bra ping-pong board. We wondered what they meant but we soon found out.

I am not sure if you have to use ping-pong bats or just throw the balls in and do you get a bigger prize for pocketing an AA cup as opposed to a DD?



Recent Projects



**The birth of a dirty great doorstop.
One of these had been created and sold to a lady who was renovating a property in France and needed to hold a pair of barn doors open so we thought we might make another one.**

Surprise, surprise. One of the organisers at Suella Braverman MP's Senior Citizen's Fair in May this year bought another one – this time to keep her French Doors open.

Recent Projects

With the experience of plinky-plonks behind him, Oliver teamed up with Chris L, Bob, and various other members to create a black lotus for an elderly lady in Portchester. It was done for the fun and to help somebody out but the lady very kindly gave us a nice donation for the work.



Recent Projects

Redlands School

We were asked to perform some decorating tasks at Redlands School a while ago. The paint came, the weather came and some of the Shed members came to transform some very tired looking benches at Redlands School into a little bit of sunshine - et voilà. We must have made a good job of it because we have recently been asked to paint some doors for them.



Recent Projects

Uplands School

We were asked if we could repair some of the equipment at the school – climbing frame, gazebo and fencing.



Recent Projects

Orchard Lee Junior, Gomer and Titchfield Schools

Orchard Lee was first of the wood sheds that we have made for local schools closely followed by one for Gomer along with a mud kitchen and then welly boot racks for 180 pairs of boots for Titchfield.



Fareham Men's Shed



At Titchfield Festival Theatre

And now



Pictures from the 2019 MacMillan coffee morning

Fareham Men's Shed



At Titchfield Festival Theatre



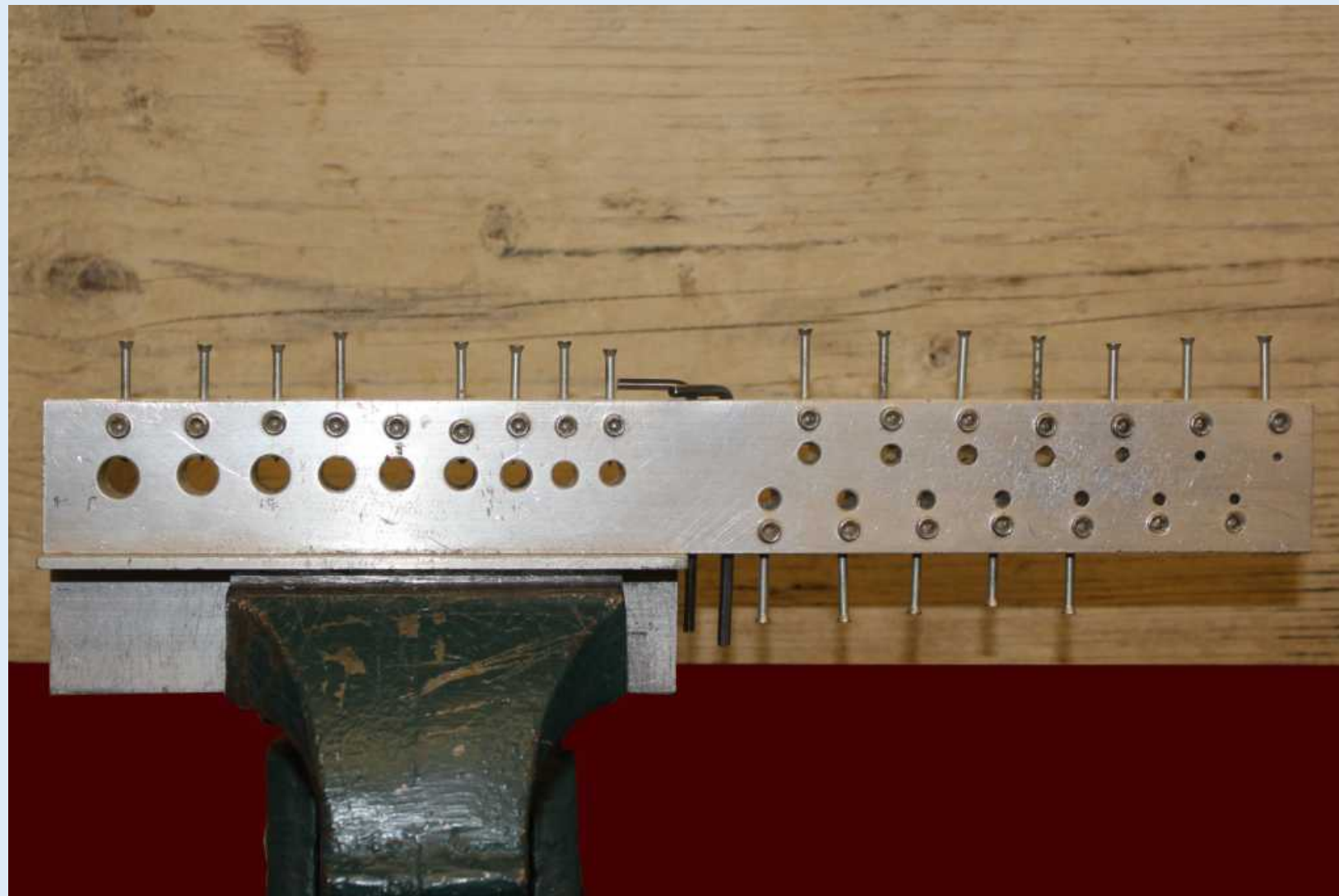
Shedric

Fareham Men's
Shed



At Titchfield Festival Theatre

The stripper



Fareham Men's Shed



At Titchfield Festival Theatre



Shedric



Fareham Men's Shed



At Titchfield Festival Theatre

These African instruments pre-date western instruments such as the harpsichord, cornamuse and virginal by a few thousand years yet they are still in everyday use in the continent. They belong to the idiophone family of instruments which include the Jew's harp, cymbal and even such things as music boxes and changed their title to Kalimba in the 1950s. Originally they were made from wood, coconut and bamboo and were associated with the Shona peoples of Zimbabwe who integrated them into their worship and rituals.



FMS has started to manufacture westernised versions of these instruments using such 'junk' materials as old cycle spokes, concrete reinforcing rods, tobacco tins, hacksaw blades and now computer hard disk platters, but basically they are the same instrument. The sound is created by 'twanging' the keys the natural harmonic being amplified by the soundbox. Tuning is achieved basically by changing the length of the tine.



Fareham Men's Shed



At Titchfield Festival Theatre



Supported by

Hampshire
County Council

WAITROSE
& PARTNERS

ROYAL
VOLUNTARY
SERVICE

FAREHAM
BOROUGH COUNCIL

ASDA foundation

TESCO

ParkCO
GateOP